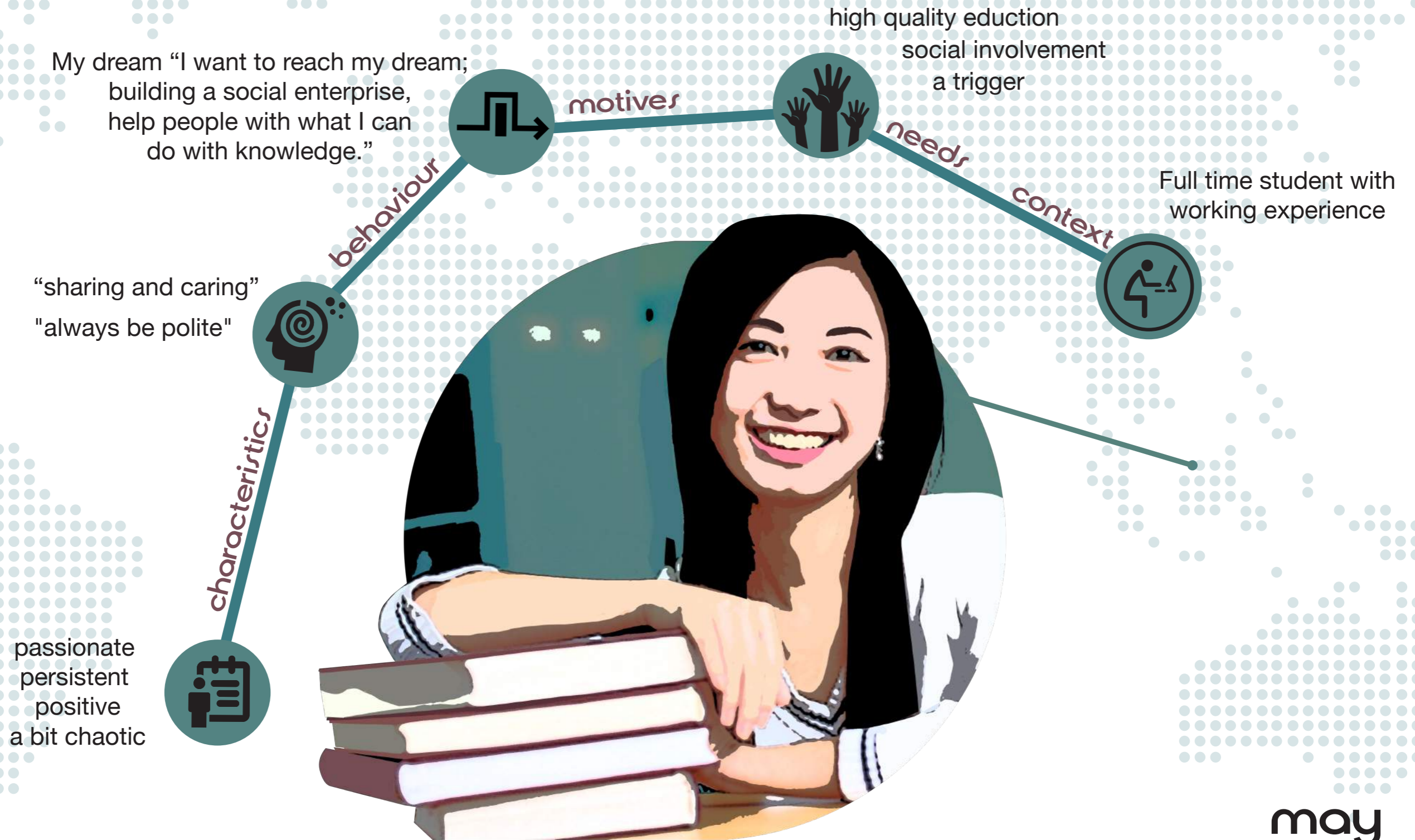


Intercultural online learning

Final Presentation

“Make student from a high-context culture feel confident when taking part in an paid online course.”

Persona



may
23 yrs



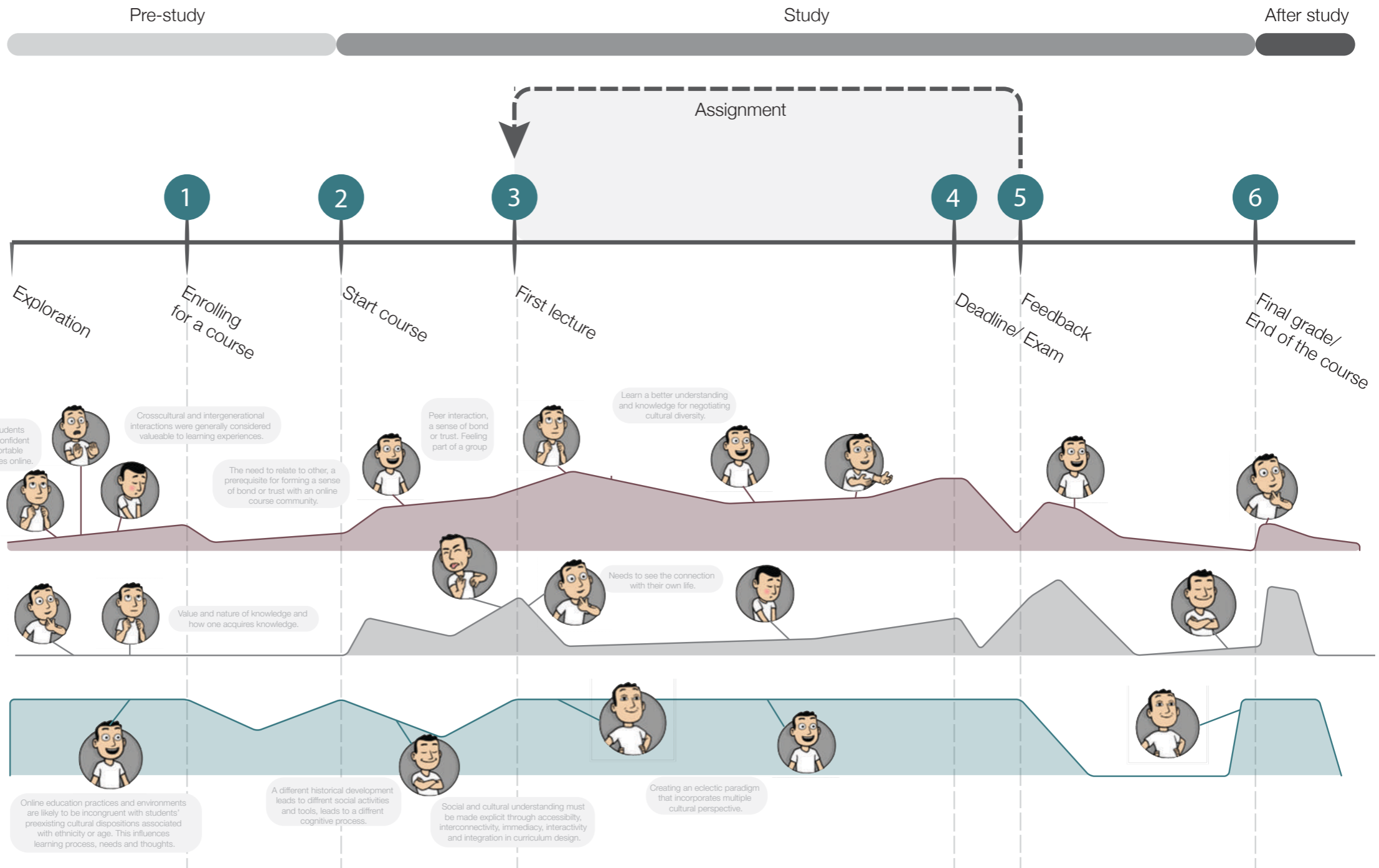
first finding



second finding

FIXED POINTS COURSE

EMOTIONS WITHIN INTERACTION LEVELS



third finding



market, NY



chinatown, NY

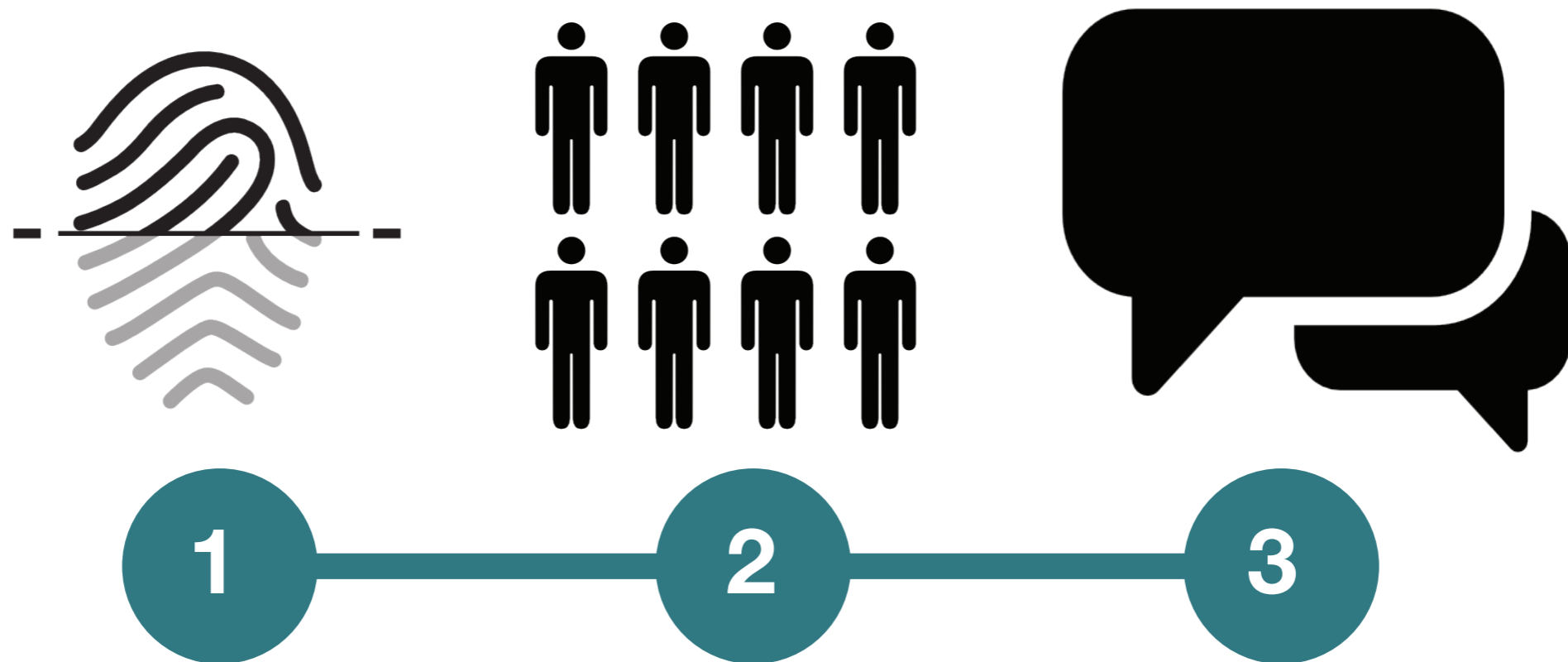


Little Italy, NY



concept

A communication tool that helps creating smaller groups and stimulates student-to-student interactions throughout the course.



fingerprint



HOW IT WORKS

FIND COURSES

SCHOOLS & PARTNERS



May



May

FULL NAME [\(edit\)](#)

May

EMAIL [\(edit\)](#)

mynameismay@gmail.com

PREFERRED LANGUAGE [\(edit\)](#)

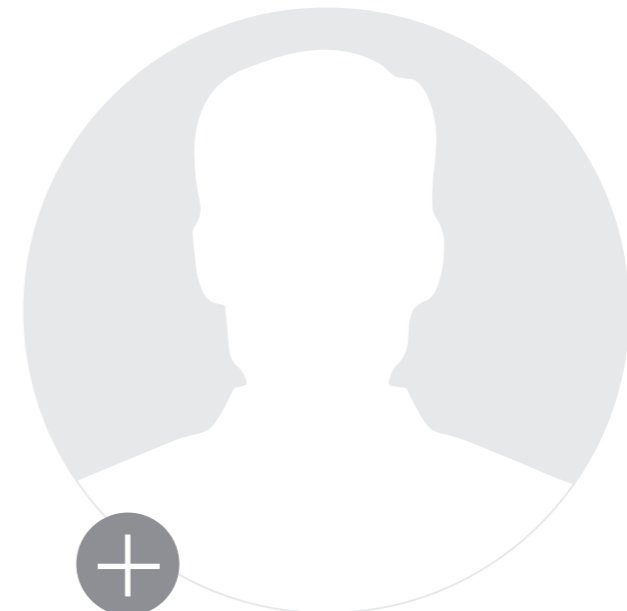
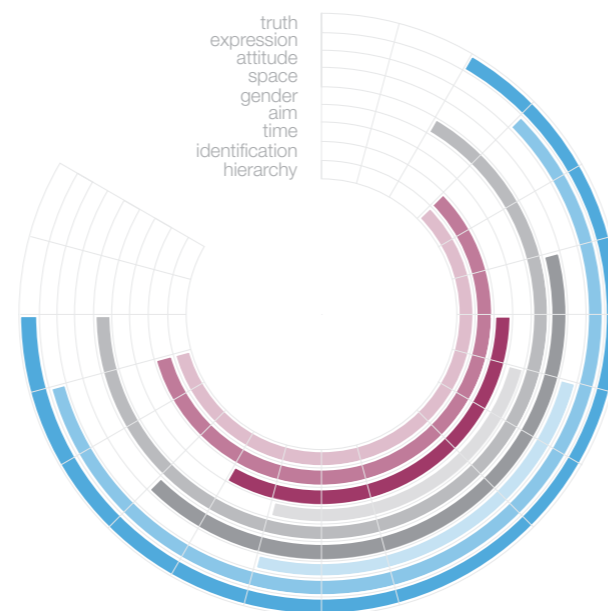
English

CONNECTED ACCOUNTS [\(edit\)](#)

EDX FINGERPRINT [\(edit\)](#)

[Reset Password](#)

edX FINGERPRINT



Questionnaire - Values, Beliefs & Practicalities



WORD ASSOCIATION

In this questionnaire you are asked to connect the relevant words



SENTENCE COMPLETION

In this questionnaire you are asked to complete the sentence with your own words



SITUATION RESPONSE

In this questionnaire you will find small movie shots that will ask for your response

community page

The screenshot displays the edX community interface. At the top, the edX logo is on the left, followed by navigation links: HOW IT WORKS, FIND COURSES, and SCHOOLS & PARTNERS. A date selector shows 'May'. Below this is a secondary navigation bar with tabs for Courseware, Course Info, Community (selected), Neighborhood, Lecturers, and FAQ. A search bar is located in the top right of the main content area.

The main content area is divided into several community threads, each with a title, a brief description, and a list of participants:

- Sketchbookers** - *past, equal & contextual*: Features a hand-drawn diagram with a pyramid and the text 'Preston D. PMSLOW?'. A comment from 'sharon' says 'explanation needed'. Recent activity is from 10 min ago.
- Library Garden** - *low hierarchy, individual & duty*: Shows a document icon and a comment from 'Malcom' that says 'draft Malcom'. Recent activity is from 47 min ago.
- Robinson Island** - *achievement, individual & emotional*: No visible content or activity.
- Ship crew** - *hierarchy, together & absolute*: Includes a video player showing a scene from a ship's interior. A comment from 'Edgar R.' says 'inspiring movie for assignment 1'. Recent activity is from 2 hr ago.
- The community centre** - *public, fun & emotional*: Features a video chat icon and a list of users: 'David L.' (Joined video chat), 'Marianne' (Joined video chat), and 'Ashley M.' (Left video chat). Recent activity is 'now'.
- World Trade Centre** - *future, together & duty*: Shows two document icons. Comments from 'Daniel' and 'Katy V.' both say 'assignment 1'. Recent activity is from 1 hr ago.

A 'Loading' indicator is visible at the bottom center of the page.

[Courseware](#)[Course Info](#)[Community](#)[Neighborhood](#)[Lecturers](#)[FAQ](#)[Help](#)

Sketchbookers - *past, equal & contextual*

Preston D. MASLOW?

sharon | explanation needed

RECENT ACTIVITY - 10 min. ago

Ship crew - *hierarchy, together & absolute*

15 7 0

Edgar R. | Inspiring movie for assignment 1

2 1 5

RECENT ACTIVITY - 2 hr. ago

Library Garden - *low hierarchy, individual & duty*

Maison | draft Maison

2 5 5

RECENT ACTIVITY - 4hr ago

The community centre - *public, fun & emotional*

3 0 0

David L. | Joined video chat

Neighborhood



HOW IT WORKS

FIND COURSES

SCHOOLS & PARTNERS

Home May



Courseware

Course Info

Community

Neighborhood

Lecturers

FAQ



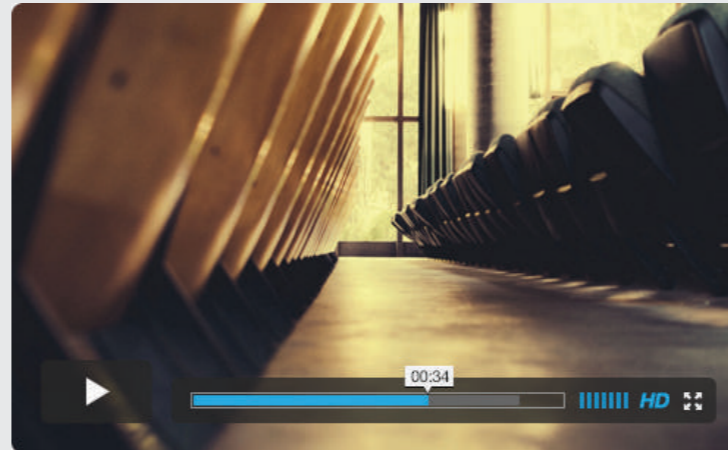
Ship crew

hierarchy, together & absolute

RECENT ACTIVITY - 2 hr. ago



Edgar R. | Inspiring movie for assignment 1



2 comments, 1 pin, 5 likes

Jada Z. Nice movie!

Vincent Yeah great...! Seen this b4. You should check out part 2.

Course Handouts

Twitter: @designjaap

Twitter hashtag: #delftxdesign

#delftxdesign



Joost Lommers @JoostLommers 20 Jan

I'm really pleased and honoured that my work on the #delftxdesign course from @DelftX on @edXOnline was awarded a Delft Design Guide

Retweeted by DelftX

Expand

Joost Lommers @JoostLommers 20 Jan

I'm really pleased and honoured that my work on the #delftxdesign course from @DelftX on

Tweet #delftxdesign



Unless otherwise specified the Course Materials of Delftx DDA691x are Copyright Delft University of Technology and are licensed under a Creative Commons Attribution-NonCommercial-ShareAlike 4.0 International License.

Help



other pages



HOW IT WORKS

FIND COURSES

SCHOOLS & PARTNERS

Home May

Courseware

Course Info

Community

Neighborhood

Lecturers

FAQ

Course Updates & News

JANUARY 12, 2015

Dear Delft Design Approach participants,

The Delft Design Approach course is almost coming to a close with the final deadline for assignments on Tuesday, 13th of January. We have been extremely impressed with your work for the course and the dedication of many of you to stick with us through the end! This has been a tough course with many open-ended assignments that required your creativity and analytical skills (designing is all about balancing these skills to come up with innovative and meaningful outcomes!) We have also been very pleased with the many people that followed some of our content. We hope it has been inspiring and insightful.

Prizes for the 10 best presentations

We would like to remind you that you have the opportunity to submit your final presentation for the competition. The course staff will select the 10 best presentations from all submissions. Please remember to share your presentation on the [worldmap](#) if you want to have a chance to be selected. The selected presentations will be showcased and their creators will receive a Delft Design Guide.

Courseware Course Info Discussion Community Lecturers FAQ **Map** Progress Instructor

MAP

Each marker on the map represents a participating student in this course. When clicking a marker, a text box opens containing the student's answer to the selected question. Browse through the map to explore!

Final presentation

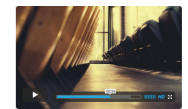
Ship crew

hierarchy, together & absolute



- Profile icons of users in the ship crew

Edgar R. | Inspiring movie for assignment 1



2 1 5

Jada Z. | Nice movie!

Vincent | Yeah great..! Seen this b4. You should check out part 2.



RECENT ACTIVITY - 2 hr. ago

Course Handouts

Twitter: @designjaap

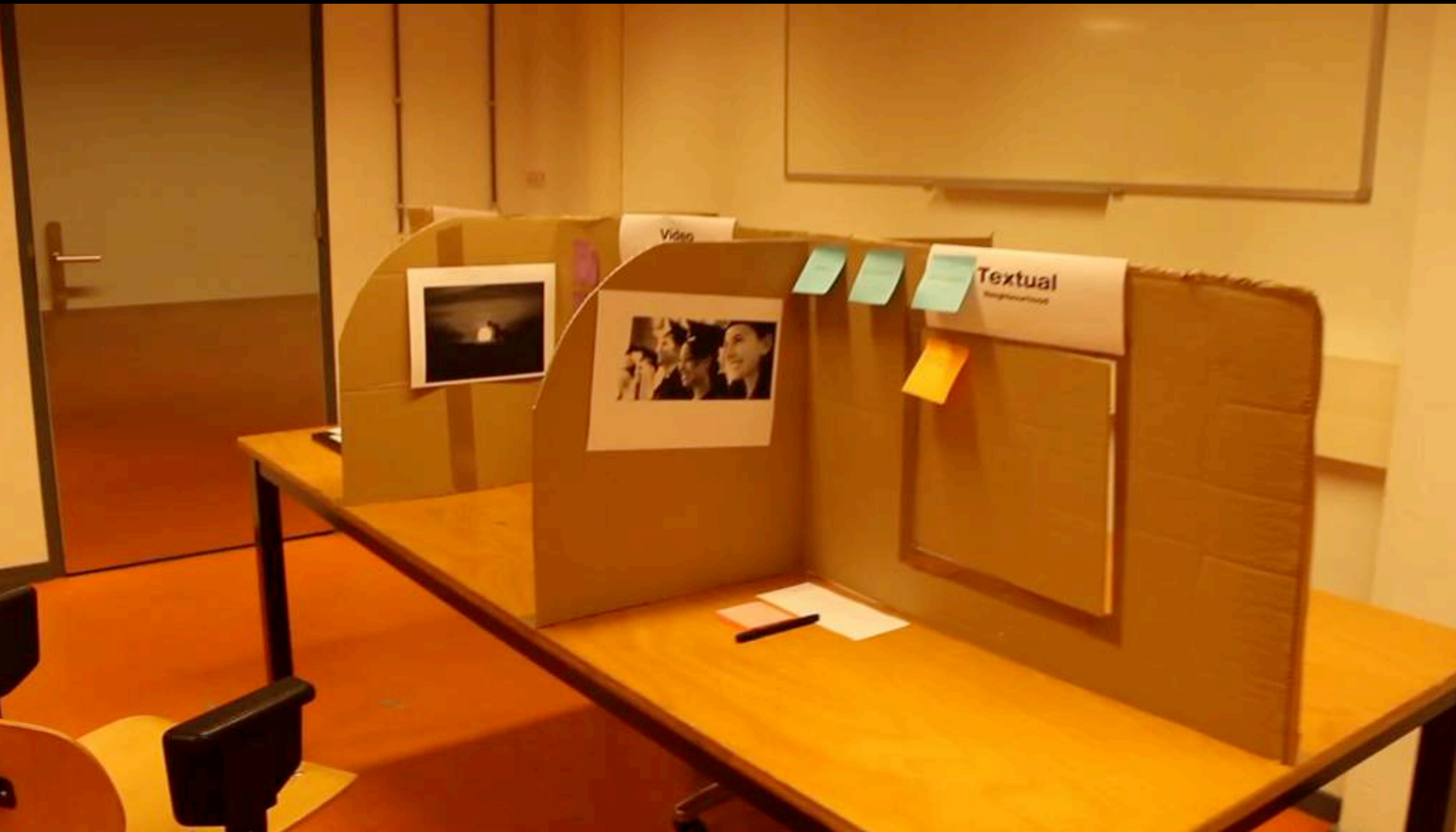
Twitter hashtag: #delftxdesign

#delftxdesign



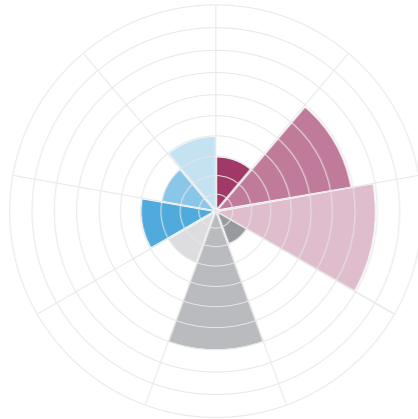
Help

evaluation study

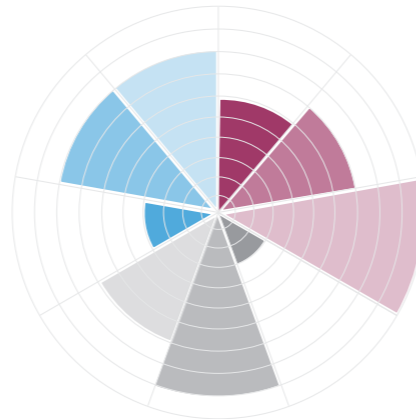


results evaluation study

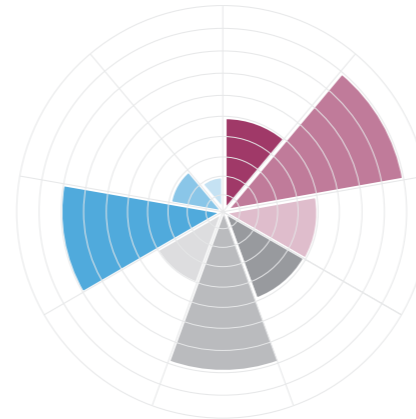
Participant 1



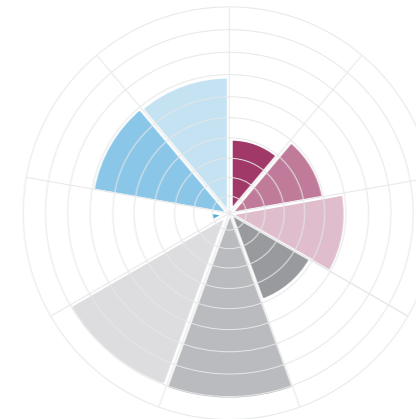
Participant 2



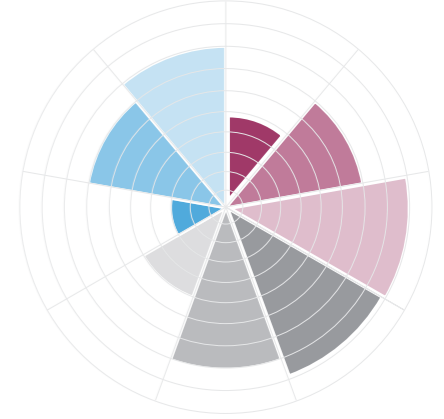
Participant 3



Participant 4



Participant 5



Starting
Neighborhood

Textual

Textual

Video

Visual

Textual

Second/Third
Neighborhood

-

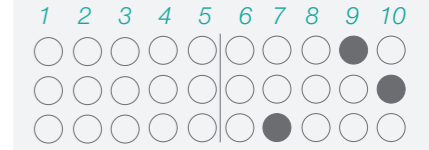
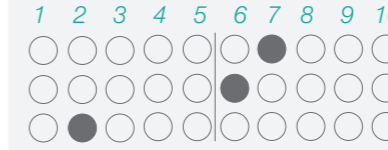
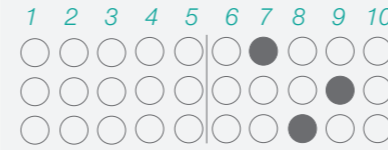
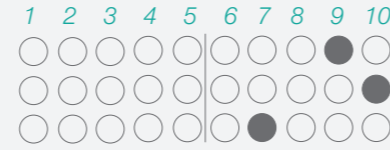
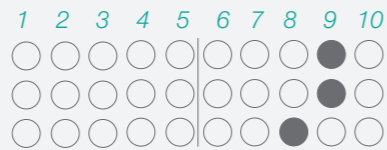
Video & Visual

Textual

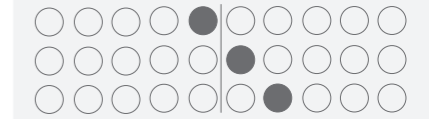
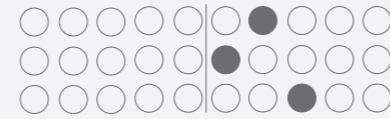
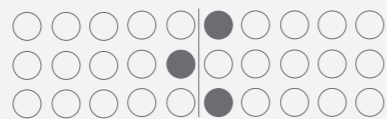
Video

-

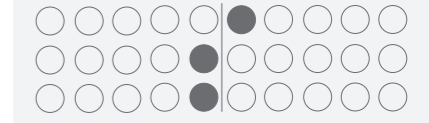
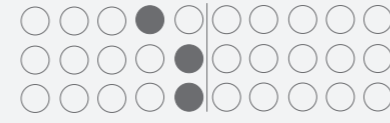
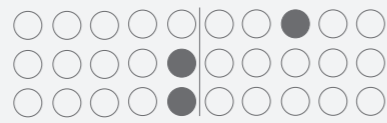
Textual Neighborhood
comfortable
confident
empowered



Video Neighborhood
comfortable
confident
empowered



Visual Neighborhood
comfortable
confident
empowered



Preference

Hierarchy

Textual

Video (care)

Video

Textual

Make usage
of all **different**
neighborhoods

Yes

Yes

Yes

Yes

Yes

recommendations

- More research about dimensions that can display students' values, beliefs and working preferences.
- Deeper explore how the dimensions could be transformed into useful communication tools.

Thank you

dimensions

